



Non-Sacrificial Panel (NSP) sample packaging

1

Packing fur (bag 1) and oral (bag 3) swabs. Only for rtPCR- NSP panels.

- A Make sure that all the vials are correctly labeled with sample ID and the sample type (FS= fur swab, OS=oral swab) → [Figure 1,2](#)
- B Oral Swab: after the collection cut the swabs above the cotton part of the swab tip with sterile scissors. Let the swab tip fall into labeled 2ml (single swab) or 5 ml tube (pool) and close → [Figure 3,4](#)
- C Fur swab: after the collection, insert the cotton swab tip into the tube up to the breaking point, close the cap of the tube by a slight pressure until the swab is broken. Use 2ml tube for a single swab or 5ml tube for pooled sampling.
- D Put all the fur swab tubes into a biohazard **BAG 1** and all the oral swab tubes into biohazard **BAG 3**.
- E Close the bags by pressing the zip lock.

Figure 1



Figure 2



Figure 3

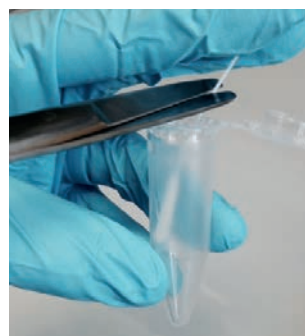


Figure 4



SAMPLING MATERIAL INCLUDED IN THIS KIT:

- + **BAG 1:** fur swabs, 2ml tubes and 5ml tube to collect swabs after sampling and a biohazard bag.
- + **BAG 2:** wet swabs with transport medium (Portagerm, oral swabs for microbiology tests - culture) and a biohazard bag.
- + **BAG 3:** flocked swabs, 2ml tubes and 5ml tube to collect swabs after sampling (oral swabs for rtPCR test) and a biohazard bag.
- + **BAG 4:** DBS cards (non-irradiated) with desiccant and a biohazard bag.
- + **BAG 5:** 2ml tubes and 5ml tube to collect fecal samples and a biohazard bag.

2

Packing wet oral swab (bag 2). Only for NSP Classic panel.

- A Make sure that all the Portagerm tubes are correctly labeled with sample ID and the sample type (WOS=wet oral swab) → Figure 5
- B After the collection put the swab into the tube containing the transport medium (Portagerm) → Figure 6
- C Put all the Portagerm tubes into biohazard **BAG 2** and close the bag by pressing the zip lock.

Figure 5

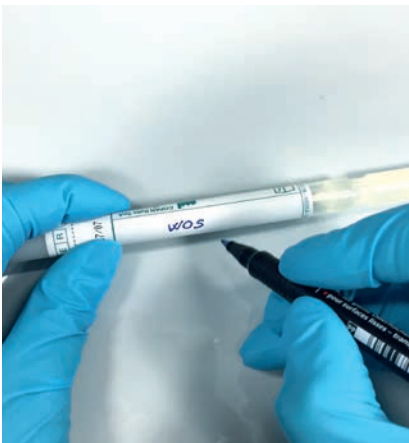


Figure 6



3

Packing Dry Blood Spot (bag 4)

- A Make sure that your DBS cards are correctly labeled with sample IDs → Figure 7,8
- B After the collection please check that **BAG 4** contains a desiccant pack and leave it in the bag → Figure 9
- C Put all the DBS cards into biohazard **BAG 4** and close the bag by pressing on the zip lock → Figure 9

Figure 7



Figure 8



Figure 9



4

Packing fecal samples (bag 5).

- A Make sure that all the vials are correctly labeled with sample IDs and the sample type (F=feces) → [Figure 10](#)
- B Put the fecal pellets into the labeled tube (2ml for single sample or 5ml for pooled samples) and close the tube. Please check that all the tubes are tightly closed → [Figure 11](#)
- C Put all the fecal sample tubes into biohazard **BAG 5** and close the bag by pressing on the zip lock bag → [Figure 12](#)

Figure 10



Figure 11

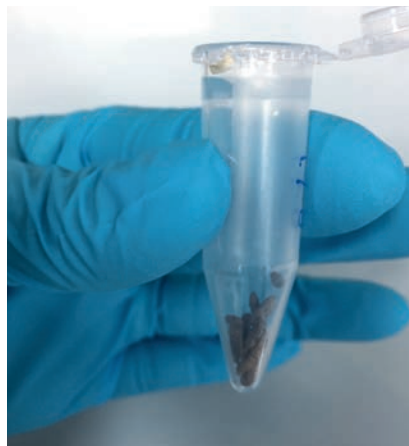


Figure 12



5

Boxing samples

- A Put all the bags containing the sample materials into the large biohazard bag included in the kit.
- B Take the large biohazard bag and place into the box.
- C Place the completed submission form with the reference number into the box.
- D Make sure that the transport box contains sufficient padding material to prevent sample movement.
- E Close the box securely with adhesive tape and make sure that the UN 3373 label remains visible.
- F Attach the shipping documents to the box.
- G Ship the box at room temperature.

!

General shipment instructions

If the external temperature is above 25°C we recommend shipping the sampling material in a polystyrene transport box containing cold packs (do not freeze).

To organize pick up and shipment of the samples

If you need help shipping the samples please send an email or call our Envigo laboratory (details listed below), informing us of the number of transportation boxes and preferred pick up date. You will receive via email all labels and confirmation of your pick up day. For collection place the labels on the box(es) and transfer to the transport company.



Hopefully these instructions have been helpful to you in packing your samples. In case of any doubt, please don't hesitate to contact one of our Envigo Laboratory facilities:

UK: Customer Services

Dodgeford Lane, Belton
 Loughborough
 Leicestershire, LE12 9TE
 United Kingdom
 Tel: +44 1530 222123
 Email: RMS-UK-Technical-services@envigo.com

EU Continent: Health Monitoring Lab

Via Nuova Valassina, 78
 Uscita Desio centro, a fianco Linea8
 20832 Desio (MB)
 Italy
 Tel: +39 02 6145 1011
 Email: healthmonitorlab@envigo.com



Also read
 the Sampling
 Instructions!

Contact us

North America 800.793.7287 EU and Asia envigo.com/contactus RMS-UK-Technical-services@envigo.com

